



European Middleware Initiative (EMI) and Standards

Morris Riedel et al.
(Jülich Supercomputing Centre)

EGI Technical Forum & OGF33 Conference
Lyon, 19-24 September 2011

Thanks: Strategic Impacts over time



Roots to Success - OGF-Europe

OGF-Europe successfully promoted and communicated the development of open standards and best practices with European leadership, in a truly global context, and by doing this, established an important pillar of the foundation for a distributed, computing infrastructure that will enable capabilities beyond current imaginations.



Cloud Computing

Cloudscape I & II

Cloud Adoption Reports

Cloud & Virtualisation Training



SDO Collaboration

Strengthening OGF in Europe



**Supporting GIN WG
Establishment of PGI WG**

ETSI - Addressing Telcos & Cloud



Microsoft

Research

OpenNebula

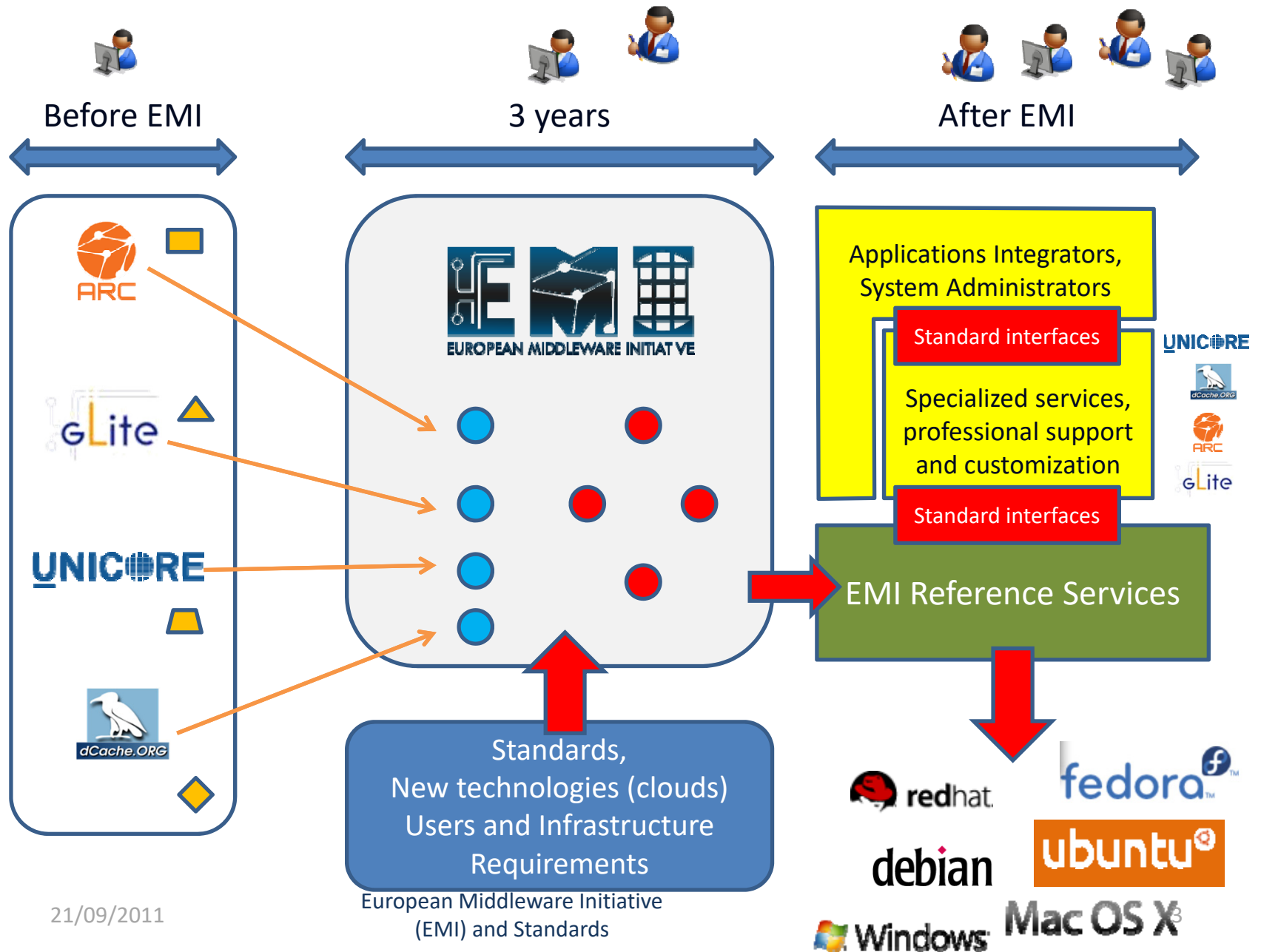
Expert Contributions

*Key Industry & Cloud provider
Contributions*

Some GIN/PGI Impacts: (with thanks to SIENA and Johannes Watzl)

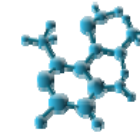
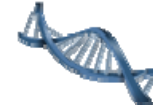
- Collaboration in GIN/PGI with CREAM-BES, ARC-BES, and UNICORE-BES and several others broad EMI consortium together (after OMII-Europe) and thus as UMD in EGI are interoperable with DEISA/PRACE
- Collaboration in GIN/PGI with GENESISII-BES and UNICORE-BES led to joint efforts in XSEDE and interoperability across Europe and the US
- Thanks to OGF-Europe & SIENA
- SIENA will have a similar impact (perhaps after its life-time)

EMI Middleware Evolution



21/09/2011

EMI: e-Science Perspective



- Focus for EMI: Support Science!
- Scientific results through innovative usage of (interoperable) e-Infrastructures
 - Beyond pure SSH, also prepare for future usage
- Maturity of specific(!) interfaces and protocols necessary to establish users trust
 - EMI – Execution services as PGI concept implementations and long-term standardization
 - BES/JSDL, HPC-BP, small updates of them (PGI)

EMI implements digital agenda parts

- Chairs OGF groups and implements standards from various SDOs together



Openness and interoperability

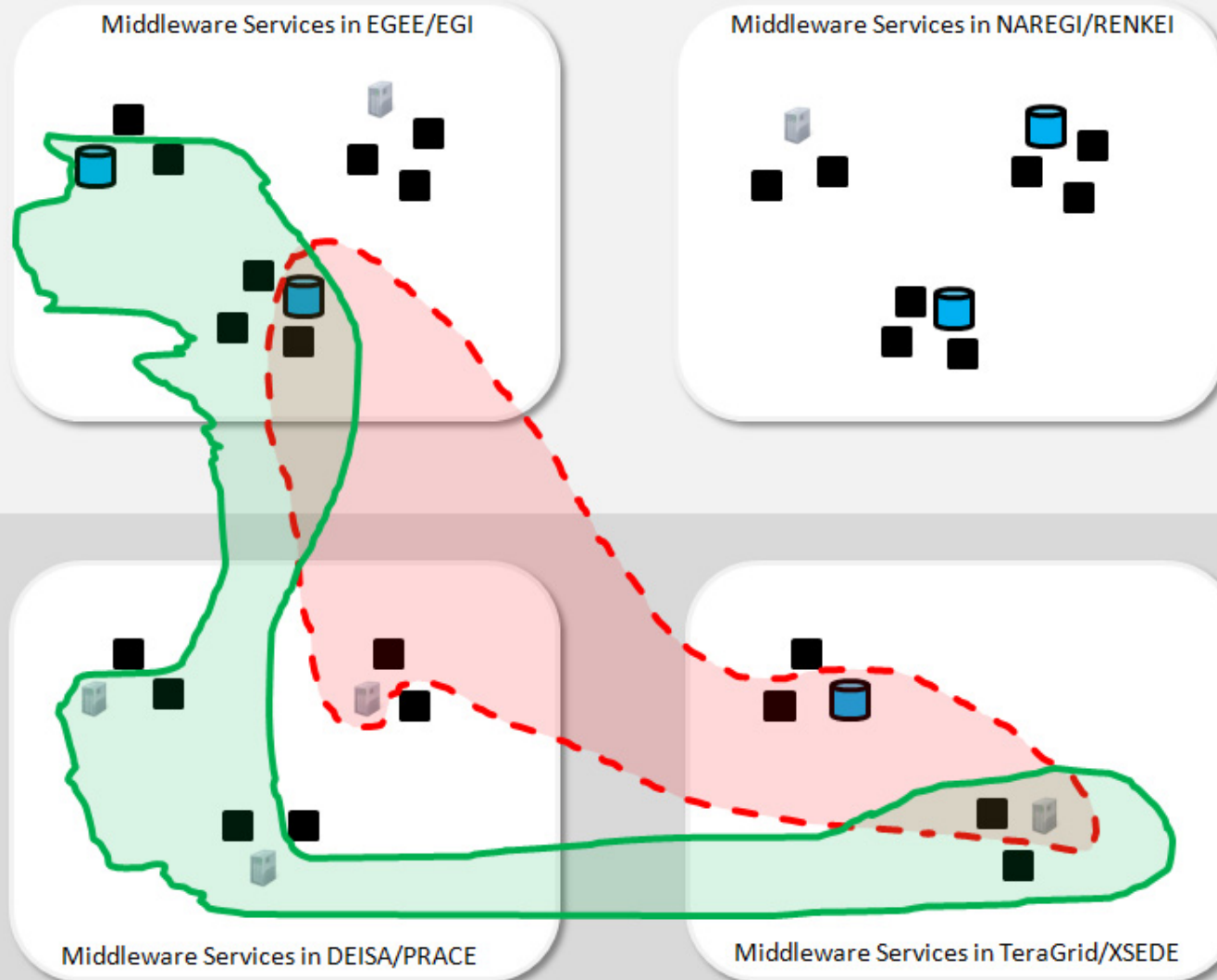
- ☒ Recognize and create **more and better standards** in Europe
- ☒ **Make better use** of these standards
- ☒ **Ensure interoperability** even in absence of standards



Digital Agenda
Part on
Interoperability

Enabling Individual Infrastructures

We moving closer to our OGF Grid Interoperation Now (GIN) VISION



(i)
Traditionally
HTC-driven
e-science
Infrastructures



UNICORE

gLite

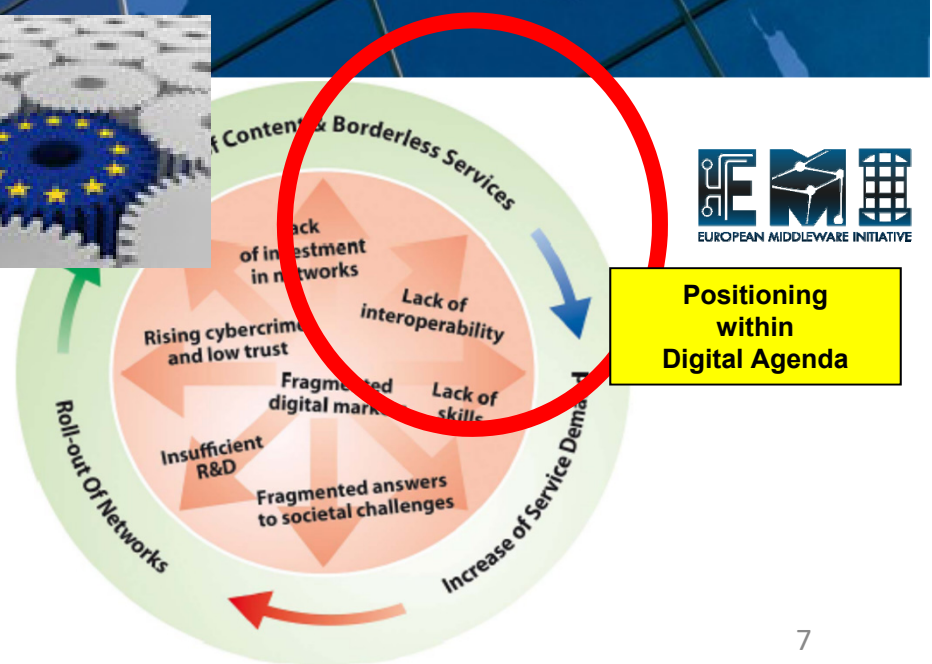
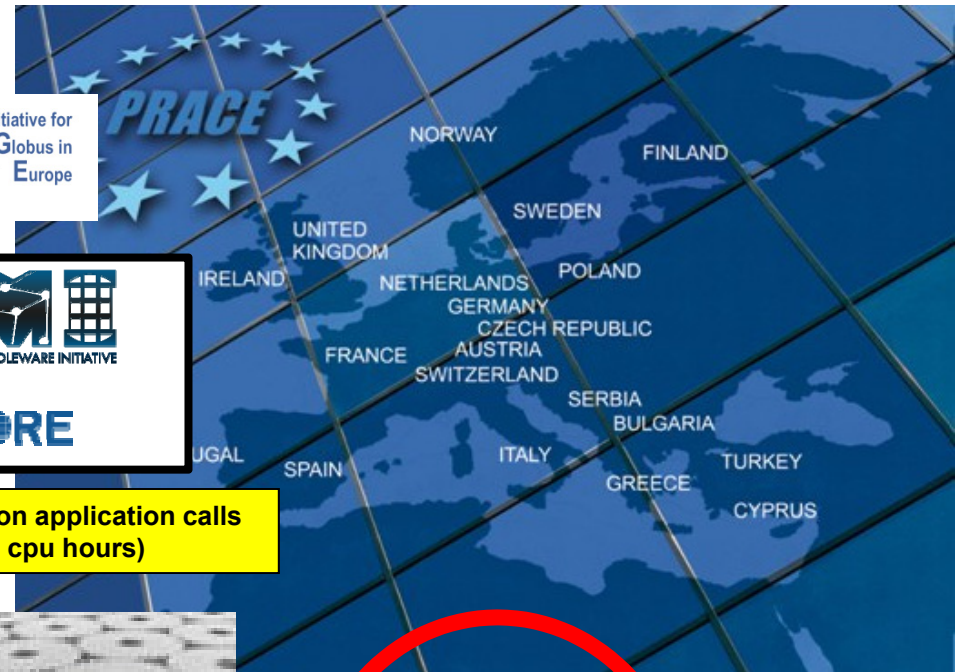
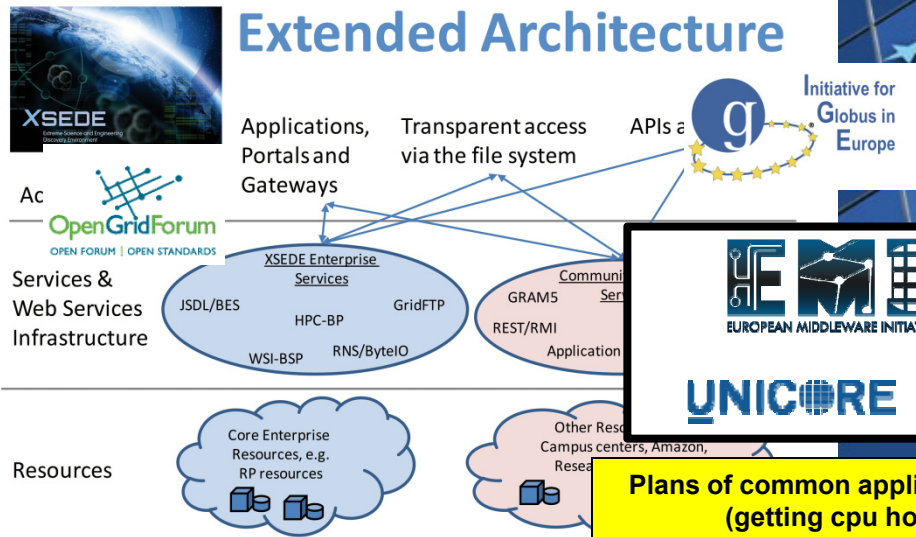


(ii)
Traditionally
HPC-driven
e-science
Infrastructures

Legend: Data Resource Compute Resource Services in middleware

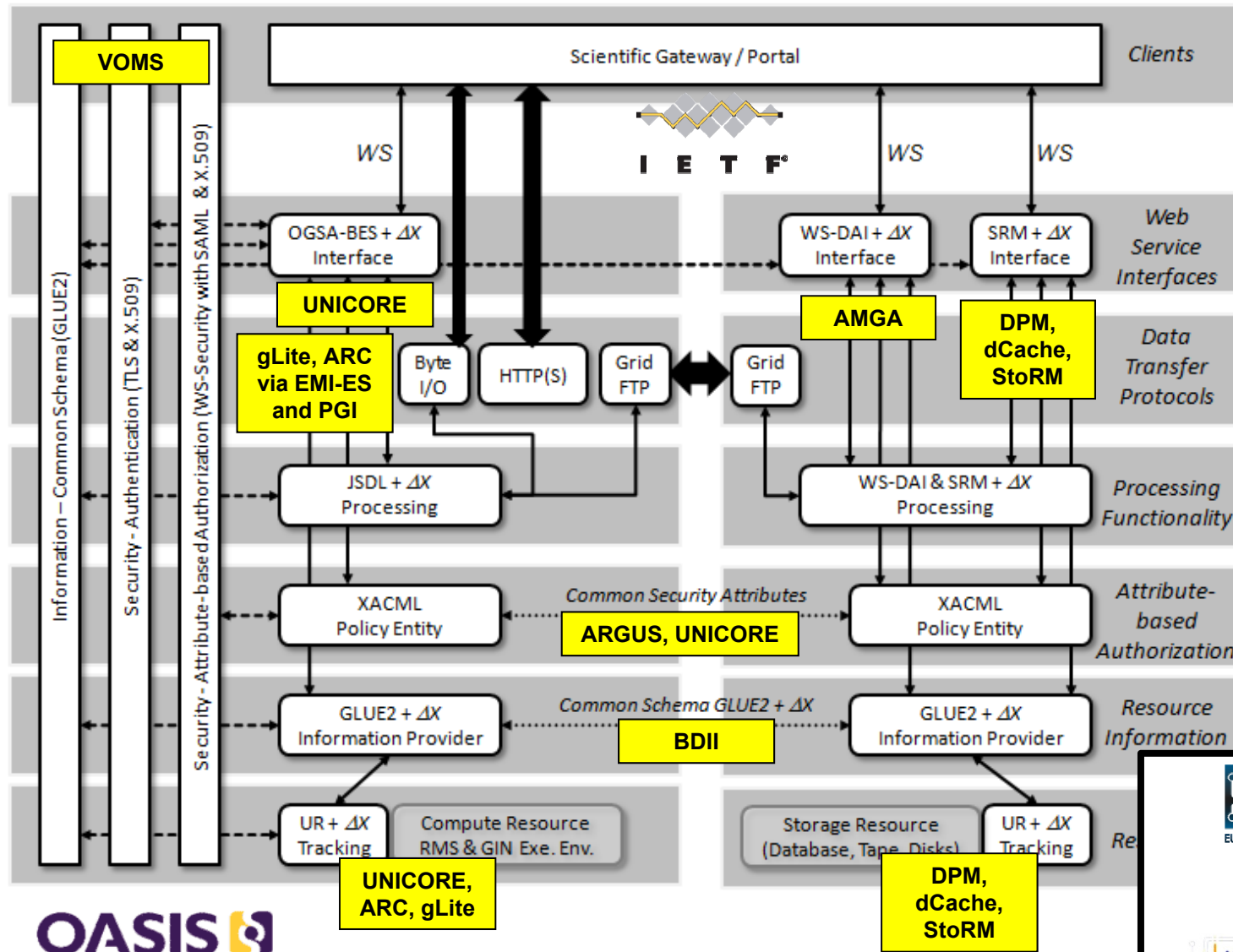
Individual Infrastructures

EMI & e-Infrastructure Landscape



Positioning within Digital Agenda

EMI Overview & PGI Reference Model



Standards Summary



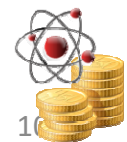
- Open Grid Forum
 - GLUE2 to describe products in the EMI ecosystem
 - BES/JSDL & evolution with PGI for job submission
 - EMI-ES proposal that implements PGI concepts for validation
 - SRM in three storage products, WS-DAI in metadata catalogue
 - UR with extensions for compute and storage!
 - EMI Storage Accounting Record Proposal
- OASIS
 - SAML and XACML
- On the horizon
 - OGF DRMAA version 2 and evolutions coming out of PGI
 - Cloud standards are observed (OCCI, CDMI), not adopted
 - WS-Trust, towards federated identity, etc.
- **Recommendation: Not invent new standards, mature existing ones!**
Stability of technologies important.



Next Steps



- Use (interoperable) middleware in science
 - Being ‘open minded’ and flexible, but still requiring stability of approaches for scientists
- Virtually hosted middleware using cloud methods (e.g. within virtual appliances)
 - Some EMI products might be useful for clouds
- Drive further standardization to encourage uptake of EMI products by industry
 - E.g. SAML, XACML, federated identity
- Explore sustainability models for EMI!



Engaging with EMI in Open Source Models!



EMI INFO-RI-261611

Incubation

in the right condition!

becomes

Join EMI work on searching
models for sustainable
software in science!

Please contact:
Morris Riedel
(m.riedel@fz-juelich.de)

Community model

Macro R&D
Infrastructures
model

Support contracts
or Subscription
model

Dual-licensing or
Commercial model



European Middleware Initiative
(EMI) and Standards